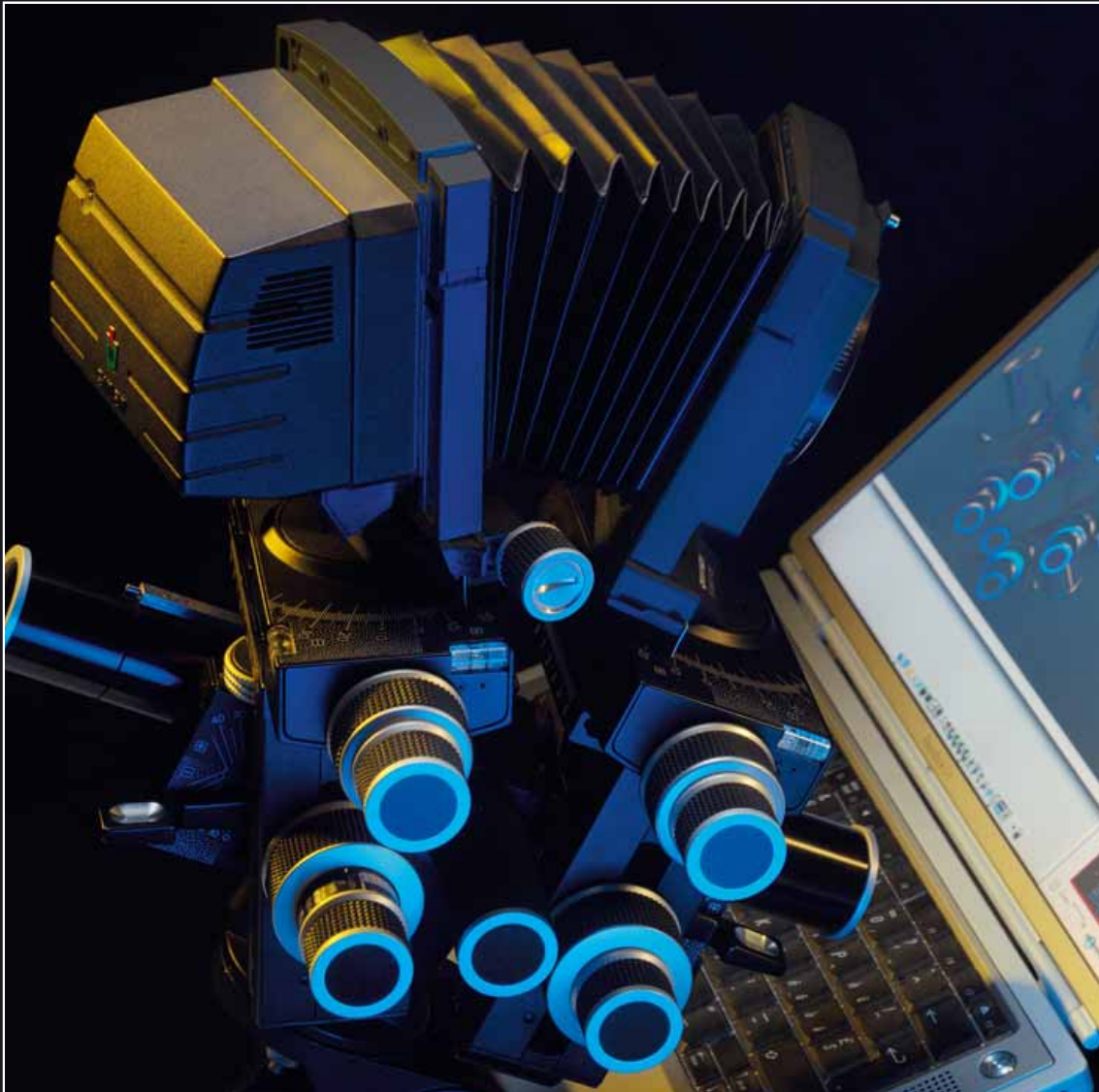


sinar



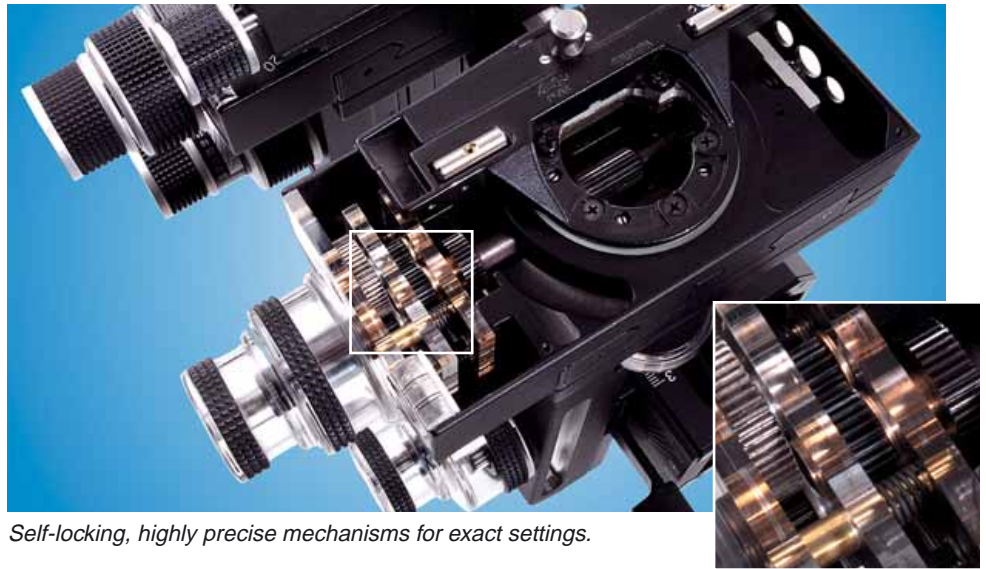
Sinar p3 View Camera

The Best of Both Worlds

The Legendary Precision of Sinar View Cameras ...

Mechanical Precision

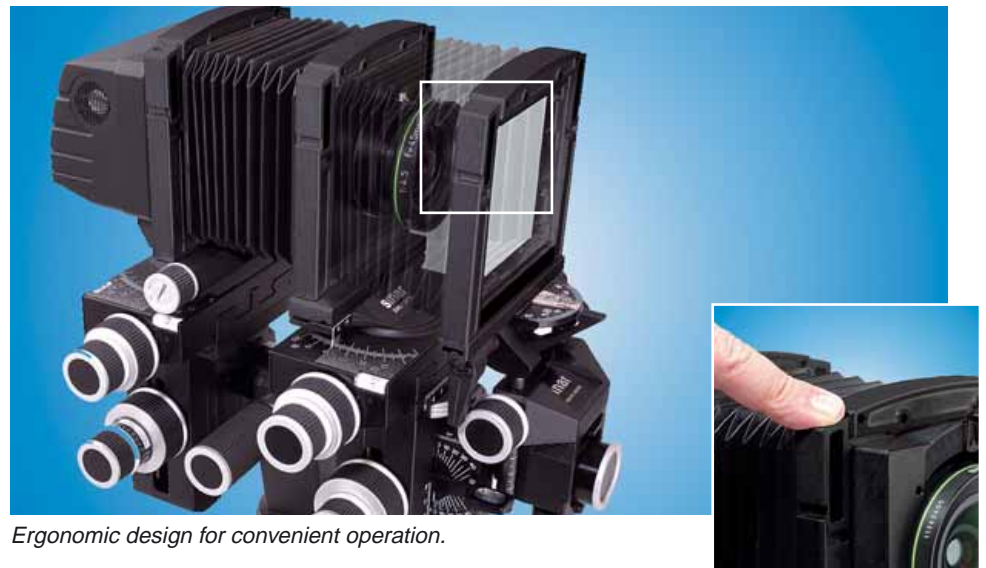
True to the tradition of the Sinar p line of view cameras, the Sinar p3 too, is equipped with highly precise mechanisms. In keeping with the requirements of digital photography, the dimensions of the new camera have been significantly reduced without sacrificing any of this traditional precision. The yaw-free camera with the proven segment swings and tilts and the asymmetrical swing- and tilt axes permits an easy and exact positioning of the plane of sharpness. This ease of working is especially significant in digital object photography with high precision requirements. The self-locking fine drives keep the camera's standards exactly in the chosen positions. The generous adjustment ranges, independent of one another, of the image standard and the lens standard (vertical and horizontal shifts as well as swings and tilts) provide the photographer with a maximum of creative freedom.



Self-locking, highly precise mechanisms for exact settings.

Ergonomic to the Last Detail

All the operating elements of the Sinar p3 camera are tailored to the size and the strength of the human hand. The ergonomic location of the operating elements makes precise and efficient work possible even in a darkened studio. In addition, snap locks on the elegant carrier frames permit quick and secure changes and adjustments of lenses, bellows and digital backs, thus enabling the photographer to concentrate entirely on the photograph itself.



Ergonomic design for convenient operation.

The Modular Design of the Sinar System

Of course the Sinar p3 camera too, is compatible with the Sinar System. Thanks to the extensive line of accessories, the modularly designed Sinar p3 can be tailored optimally to photographic tasks and to the needs of the photographer. An auxiliary standard designed specifically for the Sinar p3 serves for the use of long extensions and lens hoods. The optional sliding adapter permits the use of a focusing screen in addition to the live image on the monitor screen. Roll- or sheet films can also be exposed by means of the 4 x 5" metering back.

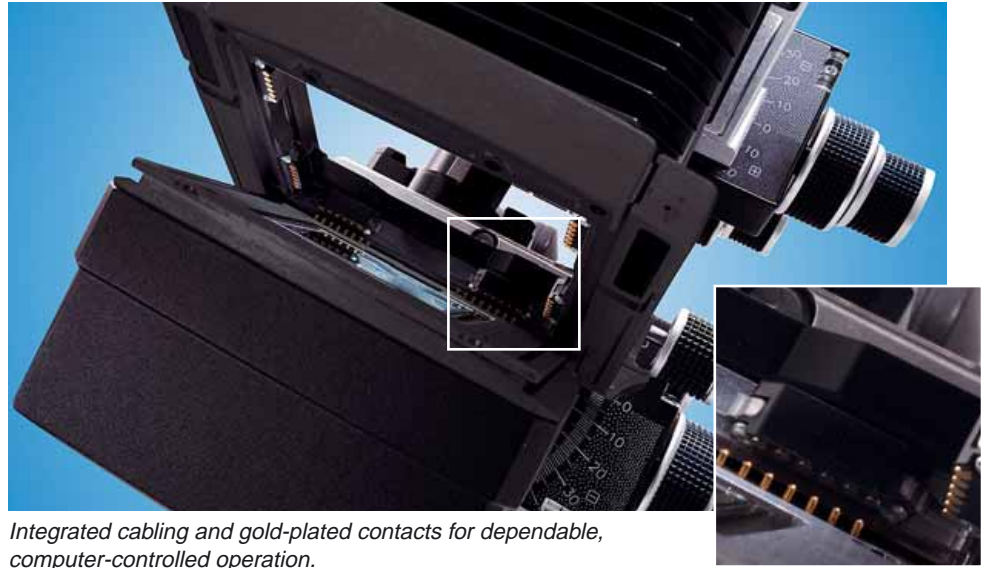


The Sinar p3 camera is compatible with several Sinar accessories.

... Optimized for the Digital Era

Intelligently Digital

The Sinar p3 camera has been tailored uncompromisingly to function with Sinarback high-end digital backs. To that end, electrical contacts have largely been integrated into the camera and the number of necessary cables has been reduced to a minimum. On the Sinar p3 all interfaces and the power supply for both the camera and the Sinarback have been incorporated into one single cable that connects the computer to the camera. The Sinar p3 camera can readily be used for mobile operation in conjunction with a notebook.



Integrated cabling and gold-plated contacts for dependable, computer-controlled operation.

Sinaron Digital Lenses

The Sinaron Digital line of lenses is an extensive array of lenses with integrated electronic shutters offered by Sinar that is optimally tailored to the resolution of high-end CCD sensors. These lenses provide the photographer with maximum sharpness, high contrast and outstanding color fidelity. The compact electronic between-the-lens shutters provide exposure times of up to $1/125$ second and they are controlled very precisely by the Sinar CaptureShop™ exposure software. This makes high-resolution multishot images possible, even without the use of a Sinarcam.



High-resolution Sinaron Digital lenses perfectly matching the requirements of digital photography in a compact design.

For Every Photographic Task



A tidy working area in the studio, optimized for digital photography.



A compact digital high-end system with one single cable for both power supply and data transfer.



Thanks to its compatibility with Sinar System components, the Sinar p3 can also be used with conventional film.

Sinar – Better Images Thanks to Modularity and Innovation

Perspective Correction and Sharpness Compensation

Make life easy for yourself – with the adjustment capabilities of the Sinar p3 View Camera. The generous adjustment range permits precise focusing, even with difficult subjects, thus preventing lengthy subsequent manipulation. Two-point focusing and sharpness compensation, made particularly easy thanks to the asymmetrical swing- and tilt axes, produces brilliant photographs – for digital applications as well as on film.

Full Integration into the Sinar CaptureShop™

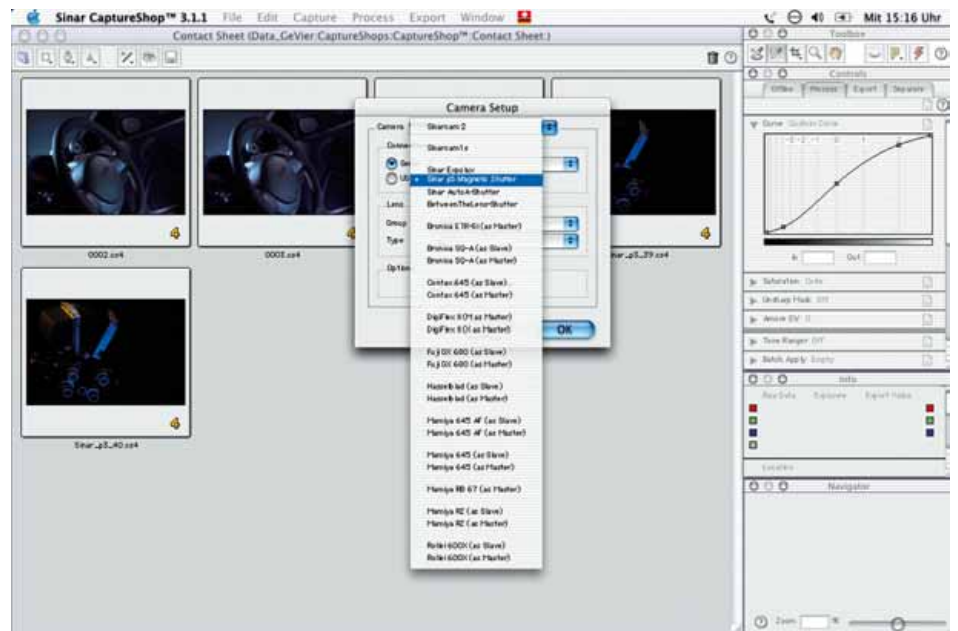
The Sinar p3 camera is the ideal platform for digital photography, because its technical capabilities are completely integrated into the Sinar CaptureShop™ exposure software. The swing- and tilt axes of the Sinar p3 camera are displayed directly on the live image on the computer screen. That makes it possible to position the plane of sharpness quickly and with pixel accuracy, even with very complex subjects. An electronic grid overlay on the monitor screen makes it easy to align the subject. In addition, layouts can be placed directly over the live monitor image electronically, which further facilitates the composition of the photograph.

The Free Choice of Resolution

The Sinar p3 camera is compatible with current and future Sinarback digital backs. In order to satisfy diverse requirements, Sinarback models are available with different sensor sizes and resolutions. The addition of a Sinar Macroscan provides a major increase in resolution and, thanks to the greater imaging surface, an optimal benefit from the adjustment capabilities of the camera.



Difficult subjects, photographed in sharp focus and with perspective correction, prevent complex and costly subsequent manipulation.



Computer-aided operation for perfect multishot exposures with the greatest color fidelity and resolution.